

# Reference List of Cargo Handling System

## Reference List of Cargo Handling system

---

### 3,500m<sup>3</sup> LPG/VCM Carrier



#### Project:

Ship type: 3,500m<sup>3</sup> LPG/VCM Carrier

Ship owner: Nanjing oil transportation co., Ltd

Shipyard: Bohai Shipbuilding Heavy Industry Co., Ltd

Year of building: 2007

Hull No.: BH513-1/ -2/ -3/ -4

Vessel Name: Jiashun

Classification: CCS

#### Ship's Principal Dimensions:

Length overall: 99.0m

Length between perpendicular: 92.0m

Breadth moulded: 16.4m

Moulded depth: 7.2m

Design draft: 5.2m

Main engine power(MCR): 2,500kW

Service speed:13.6 Kn

#### Cargo Handling System Specification:

Type of cargo tank: "C" type cargo tank

Cargo tank total capacity: 3,500 m<sup>3</sup>

Volume of cargo tank: 1,750m<sup>3</sup>/set

Number of cargo tank: two(2) sets

Material of cargo tank shell: P690QL

Material of cargo tank head: 15MnNbR

Cargo to be loading: LPG/VCM

Max. Specific Gravity: 970 kg/m<sup>3</sup>

Cargo tank design temperature: 0-45°C

Cargo tank design pressure: 1.75MPa

Unloading rate: 600m<sup>3</sup>/hr

Cargo pump: 300m<sup>3</sup>/set×2

Cargo compressor: one(1) set 460 m<sup>3</sup>/hr

Nitrogen gas generator: 200N m<sup>3</sup>/hr

#### Gloryholder's Scope of supply:

- Engineering design
- P & I diagrams for cargo handling system
- Cargo handling system specification
- Electrical schematic diagram
- Equipment supply (including: Cargo pump/cargo compressor/system valves/ESD system、nitrogen generator/Monitoring system)
- Installation and commissioning
- Instruction manuals
- Crew training
- Spare and maintenance

#### Delivery Time:

Delivery Time: 8 months

Completion date: September 2007

---

#### **Gloryholder Liquefied Gas Machinery Co., Ltd**

Factory Add: 13, Shuyuan Industries Zone, 88, Liaohe East Road, Development District, Dalian, P.R. China, 116600  
Tel: +86-411-87341332 Fax: +86-411-87341333 Email: Sales@gh-igm.com

## Reference List of Cargo Handling system

---

### 3,500m<sup>3</sup> LPG/VCM Carrier



#### Project:

Ship type: 3,500m<sup>3</sup> LPG/VCM Carrier  
Ship owner: Shenzhen haihong shipping co., Ltd  
Shipyard: ZheJiang HaiHong Shipyard  
Year of building: 2006  
Hull No.: HH3600-1/2  
Classification: CCS

#### Ship's Principal Dimensions:

Length overall: 96.6m  
Length between perpendicular: 89.0m  
Moulded depth: 16.0m  
Breadth moulded: 7.2m  
Design draft: 5.2m  
Main engine power(MCR): 2,500kW  
Service speed:13 Kn

#### Cargo Handling System Specification:

Type of cargo tank: "C" type cargo tank  
Cargo tank total capacity: 3,500 m<sup>3</sup>  
Volume of cargo tank: 1,750 m<sup>3</sup>/set  
Number of cargo tank: two(2) sets  
Material of cargo tank shell: P690QL  
Material of cargo tank head: 15MnNbR  
Cargo to be loading: LPG/VCM  
Max. Specific Gravity: 970 kg/m<sup>3</sup>  
Cargo tank design temperature: 0-45°C  
Cargo tank design pressure: 1.72MPa  
Unloading rate: 600m<sup>3</sup>/hr  
Cargo pump: 300m<sup>3</sup>/set×2  
Cargo compressor: one(1) set 460m<sup>3</sup>/hr  
Nitrogen gas generator: 100Nm<sup>3</sup>/hr

#### Gloryholder's Scope of supply:

- Engineering design
- P & I diagrams for cargo handling system
- Cargo handling system specification
- Electrical schematic diagram
- Equipment supply (including: Cargo pump/cargo compressor/system valves/ESD system、nitrogen generator/Monitoring system)
- Installation and commissioning
- Instruction manuals
- Crew training
- Spare and maintenance

#### Delivery Time:

Delivery Time: 10 months  
Completion date: 2008

---

#### **Gloryholder Liquefied Gas Machinery Co., Ltd**

Factory Add: 13, Shuyuan Industries Zone, 88, Liaohe East Road, Development District, Dalian, P.R. China, 116600  
Tel: +86-411-87341332 Fax: +86-411-87341333 Email: Sales@gh-igm.com

## Reference List of Cargo Handling system

---

### 3,600m<sup>3</sup> LPG/VCM Carrier



#### **Project:**

Ship type: 3,600m<sup>3</sup> LPG/VCM Carrier  
Ship owner: Ningbo Litian Shipping Co.,Ltd  
Shipyard: ZheJiang Tenglong Shipyard  
Year of building: 2008  
Hull No.: TL3600-1  
Classification: CCS

#### **Ship's Principal Dimensions:**

Length overall: 99.8m  
Length between perpendicular: 92.0m  
Breadth moulded: 14.8m  
Moulded depth: 7.2m  
Design draft: 5.2m  
Main engine power(MCR): 2,500kW  
Service speed:13.1 Kn

#### **Cargo Handling System Specification:**

Type of cargo tank: "C" type cargo tank  
Cargo tank total capacity: 3,600m<sup>3</sup>  
Volume of cargo tank: 1,800m<sup>3</sup>/set  
Number of cargo tank: two(2) sets  
Material of cargo tank shell: WDL610E  
Material of cargo tank head: WDL610E  
Cargo to be loading: LPG/VCM  
Max. Specific Gravity: 970 kg/m<sup>3</sup>  
Cargo tank design temperature: 0-45℃  
Cargo tank design pressure: 1.72MPa  
Unloading rate: 700m<sup>3</sup>/hr  
Cargo pump: 350m<sup>3</sup>/set  
Cargo compressor: one(1) set 460m<sup>3</sup>/hr  
Nitrogen gas generator: 100Nm<sup>3</sup>/hr

#### **Gloryholder's Scope of supply:**

- Engineering design
- P & I diagrams for cargo handling system
- Cargo handling system specification
- Electrical schematic diagram
- Equipment supply (including: System valves//Cargo tank monitoring system/ESD system、nitrogen generator/Monitoring system)
- Installation and commissioning
- Instruction manuals
- Crew training
- Spare and maintenance

#### **Delivery Time:**

Delivery Time: 8 months  
Completion date: February 2010

---

### **Gloryholder Liquefied Gas Machinery Co., Ltd**

Factory Add: 13, Shuyuan Industries Zone, 88, Liaohe East Road, Development District, Dalian, P.R. China, 116600  
Tel: +86-411-87341332 Fax: +86-411-87341333 Email: Sales@gh-igm.com

## Reference List of Cargo Handling system

---

### 3,600m<sup>3</sup> LPG/VCM/LEG/LNG

#### (Multi-Gas) Carrier



#### Project:

Ship type: 3,600m<sup>3</sup> LPG/LEG/LNG Carrier  
Ship owner: Lauritzan Kosen A/S Shipyard  
Shipyard: Yangzhou Kejin Shipyard Co.,Ltd  
Year of building: 2009  
Hull No.: KJ07070/1/2/3/5/6(MultiGas)  
Classification: NK

#### Ship's Principal Dimensions:

Length overall: 99.0m  
Length between perpendicular: 89.9m  
Breadth moulded: 17.0m  
Moulded depth: 7.2m  
Design draft: 5.2m  
Main engine power(MCR): 2,500kW  
Service speed: 13 Kn

#### Cargo Handling System Specification:

Type of cargo tank: "C" type cargo tank  
Cargo tank total capacity: 3,600m<sup>3</sup>  
Volume of cargo tank: 1,800m<sup>3</sup> /set  
Number of cargo tank: two(2) sets  
Material of cargo tank: KD63-M-PV(9Ni)  
Cargo to be loading: LPG/VCM/LEG/LNG  
Max. Specific Gravity: 970 kg/m<sup>3</sup>  
Cargo tank design temp.: 0(-163)~45°C  
Cargo tank design pressure: 1.75(0.5)MPa  
Unloading rate: 600m<sup>3</sup>/hr  
Cargo pump: 300m<sup>3</sup>/set×2  
Cargo compressor: one(1) set  
Nitrogen gas generator: 200Nm<sup>3</sup> /hr

#### Gloryholder's Scope of supply:

- Engineering design
- Electrical schematic diagram
- Equipment supply (including: Safety valves /Nitrogen generator)
- Installation and commissioning
- Instruction manuals
- Crew training
- Spare and maintenance

#### Delivery Time:

Delivery Time: 10 months  
Completion date: 2011

---

#### **Gloryholder Liquefied Gas Machinery Co., Ltd**

Factory Add: 13, Shuyuan Industries Zone, 88, Liaohe East Road, Development District, Dalian, P.R. China, 116600  
Tel: +86-411-87341332 Fax: +86-411-87341333 Email: Sales@gh-igm.com



## Reference List of Cargo Handling system

---

### 5,500m<sup>3</sup> LPG/VCM Carrier



#### **Project:**

Ship type: 5,500m<sup>3</sup> LPG/VCM Carrier  
Ship owner: Wideshine Shipping Co.,Ltd  
Shipyards: Guangzhou Hangtong  
Shipbuilding & Shipping Co., Ltd.  
Year of building: 2011  
Hull No.: HT102211/ HT102212  
Vessel Name: Hongyu  
Classification: CCS

#### **Ship's Principal Dimensions:**

Length overall: 110.0m  
Length between perpendicular: 102.0m  
Breadth moulded: 17.8m  
Moulded depth: 7.80m  
Design draft: 5.2m  
Main engine power(MCR): 2,574kW  
Service speed:13.1 Kn

#### **Cargo Handling System Specification:**

Type of cargo tank: "C" type cargo tank  
Cargo tank total capacity: 2,750m<sup>3</sup>  
Volume of cargo tank: 5,500m<sup>3</sup>/set  
Number of cargo tank: two(2) sets  
Material of cargo tank shell: P690QL  
Material of cargo tank head: 15MnNbR  
Cargo to be loading: LPG/VCM  
Max. Specific Gravity: 970 kg/m<sup>3</sup>  
Cargo tank design temperature: 0-45℃  
Cargo tank design pressure: 1.75MPa  
Unloading rate: 700m<sup>3</sup>/hr  
Cargo pump: 350m<sup>3</sup>/set×2  
Cargo compressor: one(1) set 420m<sup>3</sup>/hr  
Nitrogen gas generator: 300Nm<sup>3</sup>/hr

#### **Gloryholder's Scope of supply:**

- Engineering design
- P & I diagrams for cargo handling system
- Cargo handling system specification
- Electrical schematic diagram
- Equipment fabricating and supply (Including: System valve/Emergency shutdown system/Cargo tank monitoring system/Nitrogen generator/Monitoring & alarm panel)
- Installation and commissioning
- Instruction manuals
- Crew training

#### **Delivery Time:**

Delivery Time: 8 months  
Completion date: October 2012

---

### **Gloryholder Liquefied Gas Machinery Co., Ltd**

Factory Add: 13, Shuyuan Industries Zone, 88, Liaohe East Road, Development District, Dalian, P.R. China, 116600  
Tel: +86-411-87341332 Fax: +86-411-87341333 Email: Sales@gh-igm.com

## Reference List of Cargo Containments System

---

### 3,940m<sup>3</sup> LPG Carrier



#### **Project:**

Ship type: 3,940m<sup>3</sup> LPG Carrier

Shipowner: Meghna Fresh LPG Limited

Shipyard

Meghna Shipbuilders & Dockyard Ltd.

Year of building:2017

Hull No.: MSD58

Classification: RINA

#### **Ship's Principal Dimensions:**

Length overall: 99.99m

Length between perpendicular: 94.35m

Breadth moulded: 17.5m

Moulded depth: 8.00m

Design draft:4.0m

Main engine power(MCR): 1,040kW

Service speed:12.0 Kn

#### **Cargo Handling System Specification:**

Type of cargo tank: "C" type cargo tank

Cargo tank total capacity: 3,940m<sup>3</sup>

Volume of cargo tank: 1,970m<sup>3</sup>/set

Number of cargo tank: two(2) sets

Material of cargo tank: 07MnNiVDR

Cargo to be loading: LPG

Max. Specific Gravity: 650 kg/m<sup>3</sup>

Cargo tank design temperature: -50℃

Cargo tank design pressure: 1.8MPa

Unloading rate: 600m<sup>3</sup>/hr

Cargo pump: 300m<sup>3</sup>/set×2

#### **Gloryholder's Scope of supply:**

- Engineering design
- P & I diagrams for cargo handling system
- Cargo tank & insulation design
- Cargo handling system specification
- Electrical schematic diagram
- Cargo tank supply
- Equipment fabricating and supply (Including: System valve/Emergency shutdown system/Cargo tank monitoring system/Nitrogen generator/Monitoring & alarm panel)
- Installation and commissioning
- Instruction manuals
- Crew training

#### **Delivery Time**

2018

---

### Gloryholder Liquefied Gas Machinery Co., Ltd

Factory Add: 13, Shuyuan Industries Zone, 88, Liaohe East Road, Development District, Dalian, P.R. China, 116600

Tel: +86-411-87341332 Fax: +86-411-87341333 Email: Sales@gh-igm.com

## Reference List of Cargo Containments System

---

### 3,940m<sup>3</sup> LEG/LPG Carrier



#### **Project:**

Ship type: 3,940m<sup>3</sup> LEG/LPG Carrier  
Shipowner: Meghna Fresh LPG Limited  
Shipyard  
Meghna Shipbuilders & Dockyard Ltd.  
Year of building: 2017  
Hull No.: MSD59  
Classification: RINA

#### **Ship's Principal Dimensions:**

Length overall: 99.99m  
Length between perpendicular: 94.35m  
Breadth moulded: 17.5m  
Moulded depth: 8.00m  
Design draft: 4.0m  
Main engine power(MCR): 1,040kW  
Service speed: 12.0 Kn

#### **Cargo Handling System Specification:**

Type of cargo tank: "C" type cargo tank  
Cargo tank total capacity: 3,940m<sup>3</sup>  
Volume of cargo tank: 1,970m<sup>3</sup>/set  
Number of cargo tank: two(2) sets  
Material of cargo tank: 5Ni-steel  
Cargo to be loading: LPG/LEG  
Max. Specific Gravity: 650 kg/m<sup>3</sup>  
Cargo tank design temperature: -104 °C  
Cargo tank design pressure: 1.8MPa  
Unloading rate: 600m<sup>3</sup>/hr  
Cargo pump: 300m<sup>3</sup>/set × 2

#### **Gloryholder's Scope of supply:**

- Engineering design
- P & I diagrams for cargo handling system
- Cargo tank & insulation design
- Cargo handling system specification
- Electrical schematic diagram
- Cargo tank supply
- Equipment fabricating and supply (Including: System valve/Emergency shutdown system/Cargo tank monitoring system/Nitrogen generator/Monitoring & alarm panel)
- Installation and commissioning
- Instruction manuals
- Crew training

#### **Delivery Time**

2018

---

### Gloryholder Liquefied Gas Machinery Co., Ltd

Factory Add: 13, Shuyuan Industries Zone, 88, Liaohe East Road, Development District, Dalian, P.R. China, 116600  
Tel: +86-411-87341332 Fax: +86-411-87341333 Email: Sales@gh-igm.com



## Reference List of Cargo Containments System

---

### 3,940m<sup>3</sup> LEG Carrier



#### **Project:**

Ship type: 3,940m<sup>3</sup> LEG Carrier

Shipowner: Meghna Fresh LPG Limited

Shipyard

Meghna Shipbuilders & Dockyard Ltd.

Year of building: 2017

Hull No.: MSD60/ MSD61

Classification: RINA

#### **Ship's Principal Dimensions:**

Length overall: 99.99m

Length between perpendicular: 94.35m

Breadth moulded: 17.5m

Moulded depth: 8.00m

Design draft: 4.0m

Main engine power(MCR): 1,040kW

Service speed: 12.0 Kn

#### **Cargo Handling System Specification:**

Type of cargo tank: "C" type cargo tank

Cargo tank total capacity: 3,940m<sup>3</sup>

Volume of cargo tank: 1,970m<sup>3</sup>/set

Number of cargo tank: two(2) sets

Material of cargo tank: 5Ni-steel

Cargo to be loading: LEG

Max. Specific Gravity: 650kg/m<sup>3</sup>

Cargo tank design temperature: -104°C

Cargo tank design pressure: 0.4MPa

Unloading rate: 600m<sup>3</sup>/hr

Cargo pump: 300m<sup>3</sup>/set×2

#### **Gloryholder's Scope of supply:**

- Engineering design
- P & I diagrams for cargo handling system
- Cargo tank & insulation design
- Cargo handling system specification
- Electrical schematic diagram
- Cargo tank supply
- Equipment fabricating and supply (Including: System valve/Emergency shutdown system/Cargo tank monitoring system/Nitrogen generator/Monitoring & alarm panel)
- Installation and commissioning
- Instruction manuals
- Crew training

#### **Delivery Time**

2018

---

### Gloryholder Liquefied Gas Machinery Co., Ltd

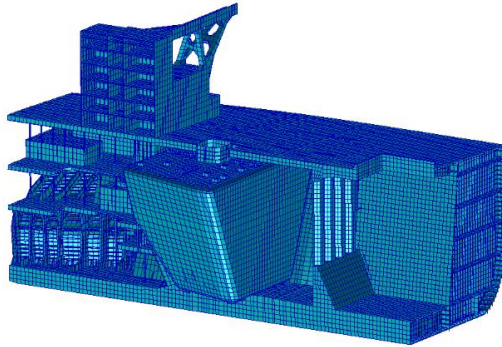
Factory Add: 13, Shuyuan Industries Zone, 88, Liaohe East Road, Development District, Dalian, P.R. China, 116600

Tel: +86-411-87341332 Fax: +86-411-87341333 Email: Sales@gh-igm.com

## Reference List of Cargo Containments System

---

### 400k VLOC Gas Ready



#### Project:

Ship type: VLOC LNG Ready

Ship owner: Vale

Shipyard: SWS

Year of building: 2016

Hull No.: H1438

Classification: DNV-GL

#### Ship's Principal Dimensions:

Length overall:360.0m

Length between perpendicular:353.0m

Breadth moulded: 65.0m

Moulded depth: 30.4m

Design draft:22.0m

Service speed: 14.8 Kn

Main engine: MAN B&W 7G80ME-C9.5

Main engine power(MCR): 29,400kW/set

#### LNG Storage Tank Specification:

Type of LNG tank: Type "B" tank)

Volume of tank: 12,500m<sup>3</sup>/set

Number of: one(1) set

Material of tank: 9% Nickel steel

Design temperature of tank:-196°C

Design pressure of tank: 0.7bar G

#### Gloryholder's engineering scope:

- ◆ B Type LNG tank's outline drawing
- ◆ Detail drawing for LNG tank ( tank's shell//Dome/ ladders/ fitting/ swash bulkheads / support structure/ insulation wood/ etc)
- ◆ Stress analysis of cargo tank
- ◆ Fatigue analysis
- ◆ Crack propagation analysis
- ◆ Boil off rate calculation
- ◆ Capacity calculation for tank's safety valves
- ◆ Insulation & second barrier design
- ◆ Calculation of terminal insulation
- ◆ Calculation of the hull temperature and associated distribution of quality and steel grades

#### Delivery Time

July , 2018

---

### Gloryholder Liquefied Gas Machinery Co., Ltd

Factory Add: 13, Shuyuan Industries Zone, 88, Liaohe East Road, Development District, Dalian, P.R. China, 116600

Tel: +86-411-87341332 Fax: +86-411-87341333 Email: Sales@gh-igm.com

## Reference List of Cargo Containments System

---

### TRF Shipping 157,500t Oil Tanker Gas Ready



#### Project:

Ship type: 157,500t Oil Tanker LNG Ready

Ship owner: TRF Ship Management AS

Shipyard: New times shipbuilding co., ltd

Year of building: 2015

Hull No.: 0315809/10/11/12/13

Classification: LR

#### Ship's Principal Dimensions:

Length overall: 276.0m

Length between perpendicular: 270.4m

Breadth moulded: 48.0m

Moulded depth: 23.2m

Design draft: 16.0m

Service speed: 14.5 Kn

Main engine: MAN B&W 6G70ME-GI

Main engine power(MCR): 15,100kW/set

#### LNG Storage Tank Specification:

Type of LNG storage tank: Single wall tank with PUF insulation. (IMO type "C" tank)

Volume of tank: 600m<sup>3</sup>/set

Number of: Two(2) sets

Material of tank: Stainless steel

Design temperature of tank:-163°C

Design pressure of tank: 0.35MPa

Outline size : Dia  $\phi$  7,000 X L 17,912 mm

Weight: 62 ton

#### Gloryholder's engineering scope:

- ◆ LNG tank's outline drawing
- ◆ Detail drawing for LNG tank ( tank's shell//Dome/ ladders/ fitting/ swash bulkheads / support structure/ insulation wood/ etc)
- ◆ Detail of tank's dome and deck sealing
- ◆ Strength calculation for LNG tank
- ◆ Boil off rate calculation
- ◆ Capacity calculation for tank's safety valves
- ◆ Calculation of terminal insulation
- ◆ Calculation of the hull temperature and associated distribution of quality and steel grades

#### Delivery Time

May, 2016

---

### Gloryholder Liquefied Gas Machinery Co., Ltd

Factory Add: 13, Shuyuan Industries Zone, 88, Liaohe East Road, Development District, Dalian, P.R. China, 116600

Tel: +86-411-87341332 Fax: +86-411-87341333 Email: Sales@gh-lgm.com

## Reference List of Cargo Containments System

---

### Dynacom Shipping 158K Oil Tanker Gas Ready



#### Project:

Ship type: 158,000t Oil Tanker LNG Ready  
Ship owner: Dynacom Tankers Management Ltd.  
Shipyard: New times shipbuilding co., ltd  
Year of building: 2016  
Hull No.: 0315814/15/16/62/63/64/ **BV**  
Hull No.: 0315817/18/65/ **ABS**  
Hull No.: 0315861/ **DNV-GL**  
Hull No.: 0315866/ **NK**

#### Ship's Principal Dimensions:

Length overall: 276.0m  
Length between perpendicular: 270.4m  
Breadth moulded: 48.0m  
Moulded depth: 23.2m  
Design draft: 16.0m  
Service speed: 14.5 Kn  
Main engine: MAN B&W 6G70ME-GI  
Main engine power(MCR): 15,100kW/set

#### LNG Storage Tank Specification:

Type of LNG tank: Single wall tank with PUF insulation. (IMO type "C" tank)  
Volume of tank: 1,900m<sup>3</sup>/set  
Number of: Two(2) sets  
Material of tank: Stainless steel  
Design temperature of tank:-163°C  
Design pressure of tank: 0.35MPa  
Outline size : Dia  $\phi$  9,300 X L 31,065 mm  
Weight: 165 ton

#### Gloryholder's engineering scope:

- ◆ LNG tank's outline drawing
- ◆ Detail drawing for LNG tank ( tank's shell//Dome/ ladders/ fitting/ swash bulkheads / support structure/ insulation wood/ etc)
- ◆ Detail of tank's dome and deck sealing
- ◆ Strength calculation for LNG tank
- ◆ Boil off rate calculation
- ◆ Capacity calculation for tank's safety valves
- ◆ Calculation of terminal insulation
- ◆ Calculation of the hull temperature and associated distribution of quality and steel grades

#### Delivery Time

July, 2017

---

### Gloryholder Liquefied Gas Machinery Co., Ltd

Factory Add: 13, Shuyuan Industries Zone, 88, Liaohe East Road, Development District, Dalian, P.R. China, 116600  
Tel: +86-411-87341332 Fax: +86-411-87341333 Email: Sales@gh-igm.com

## Reference List of Cargo Containments System

---

### **COSCO(DALIAN) 308,000t VLCC Gas Ready**



#### **Project:**

Ship type: 308,000t VLCC LNG Ready  
Ship owner: Dalian Ocean Shipping Co.,  
Ltd  
Shipyard: Dalian COSCO KHI SHIP  
Engineering Co., Ltd  
Year of building: 2016  
Hull No.: DE045  
Classification: LR

#### **Ship's Principal Dimensions:**

Length overall: 333.0m  
Length between perpendicular: 324.0m  
Breadth moulded: 60.0m  
Moulded depth: 30.5m  
Design draft: 20.5m  
Service speed: 14.0 Kn  
Main engine: MAN B&W 7G70ME-GI  
Main engine power(MCR): 31,150kW/set

#### **LNG Storage Tank Specification:**

Type of LNG tank: Single wall tank with  
PUF insulation. (IMO type "C" tank)  
Volume of tank: 6,000m<sup>3</sup>/set  
Number of: Two(2) sets  
Material of tank: Stainless steel  
Design temperature of tank:-196℃  
Design pressure of tank: 0.4MPa  
Outline size: Dia  $\phi$  13,000 X L 49,690mm  
Weight: 465 ton

#### **Gloryholder's engineering scope:**

- ◆ LNG tank's outline drawing
- ◆ Detail drawing for LNG tank ( tank's shell//Dome/ ladders/ fitting/ swash bulkheads / support structure/ insulation wood/ etc)
- ◆ Detail of tank's dome and deck sealing
- ◆ Strength calculation for LNG tank
- ◆ Boil off rate calculation
- ◆ Capacity calculation for tank's safety valves
- ◆ Calculation of terminal insulation
- ◆ Calculation of the hull temperature and associated distribution of quality and steel grades

#### **Delivery Time**

March, 2017

---

### **Gloryholder Liquefied Gas Machinery Co., Ltd**

Factory Add: 13, Shuyuan Industries Zone, 88, Liaohe East Road, Development District, Dalian, P.R. China, 116600  
Tel: +86-411-87341332 Fax: +86-411-87341333 Email: Sales@gh-igm.com

## Reference List of Cargo Containments System

---

### **COSCO(DALIAN) 319,000t VLCC Gas Ready**



#### **Project:**

Ship type: 319,000t VLCC LNG Ready  
Ship owner: Dalian Ocean Shipping Co.,  
Ltd  
Shipyard: Dalian Shipbuilding Industry  
Corporation  
Year of building: 2016  
Hull No.: T300K-77/78  
Classification: CCS

#### **Ship's Principal Dimensions:**

Length overall: 333.0m  
Length between perpendicular: 323.6m  
Breadth moulded: 60.0m  
Moulded depth: 30.5m  
Design draft: 22.5m  
Service speed: 14.0 Kn  
Main engine: MAN B&W 7G70ME-C9.5  
Main engine power(MCR): 31,150kW/set

#### **LNG Storage Tank Specification:**

Type of LNG tank: Single wall tank with  
PUF insulation. (IMO type "C" tank)  
Volume of tank: 3,500m<sup>3</sup>/set  
Number of: Two(2) sets  
Material of tank: 9% Nickel steel  
Design temperature of tank:-196°C  
Design pressure of tank: 0.4MPa  
Outline size : Dia  $\phi$  12,000 X L 35,680mm  
Weight: 259.6 ton

#### **Gloryholder's engineering scope:**

- ◆ LNG tank's outline drawing
- ◆ Detail drawing for LNG tank ( tank's shell//Dome/ ladders/ fitting/ swash bulkheads / support structure/ insulation wood/ etc)
- ◆ Detail of tank's dome and deck sealing
- ◆ Strength calculation for LNG tank
- ◆ Boil off rate calculation
- ◆ Capacity calculation for tank's safety valves
- ◆ Calculation of terminal insulation
- ◆ Calculation of the hull temperature and associated distribution of quality and steel grades

#### **Delivery Time**

April, 2017

---

### **Gloryholder Liquefied Gas Machinery Co., Ltd**

Factory Add: 13, Shuyuan Industries Zone, 88, Liaohu East Road, Development District, Dalian, P.R. China, 116600  
Tel: +86-411-87341332 Fax: +86-411-87341333 Email: Sales@gh-lgm.com